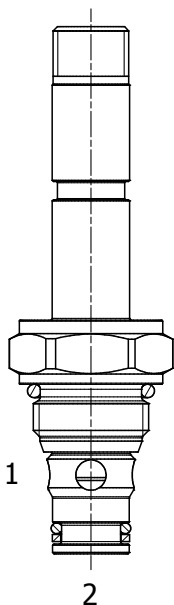


HB-S2A PILOT OPERATED POPPET, 2 WAY NORMALLY CLOSED



DESCRIPTION

8 size, 3/4-16 thread, "Power" series, solenoid operated, 2 way normally closed, pilot operated poppet valve with reverse flow de-energized.

OPERATION

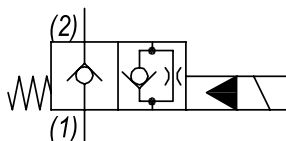
When de-energized the HB-S2A blocks flow from (1) to (2) and allows reverse flow from (2) to (1). When energized the valve allows flow from (1) to (2) and restricts flow from (2) to (1).

OPERATION OF MANUAL OVERRIDE OPTION: to override, turn the manual override screw counterclockwise. To release, turn the manual override screw clockwise.

FEATURES

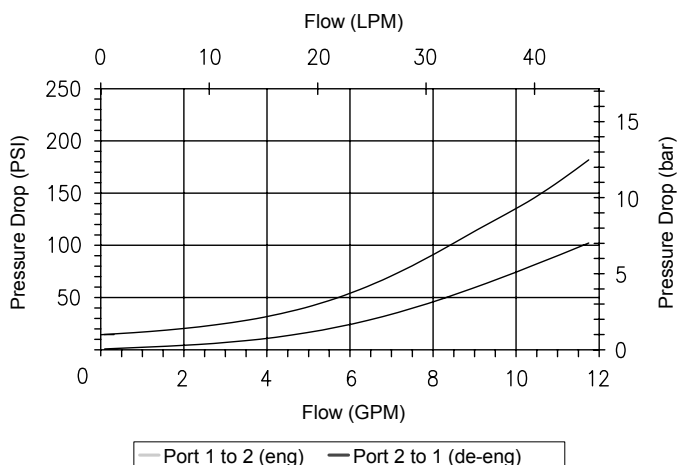
- Hardened parts for long life.
- Efficient wet-armature construction.
- Cartridges are voltage interchangeable.
- Manual override option.
- Industry common cavity.
- Unitized, molded coil design.
- Continuous duty rated solenoid.
- Optional coil voltages and terminations.

HYDRAULIC SYMBOL



PERFORMANCE

Actual Test Data (Cartridge Only)



VALVE SPECIFICATIONS

| | |
|------------------------------------|-------------------------------------|
| Nominal Flow | 12 GPM (45 LPM) |
| Rated Operating Pressure | 5000 PSI (345 bar) |
| Typical Internal Leakage (150 SSU) | 0-5 drops/min at 5000 PSI (345 bar) |
| Viscosity Range | 36 to 3000 SSU (3 to 647 cSt) |
| Filtration | ISO 18/16/13 |
| Media Operating Temp. Range | -40° to 210°F (-40° to 100°C) |
| | BUNA seals |
| | -4° to 250°F (-20° to 120°C) |
| | VITON seals |
| Weight | .29 lbs (.13 kg) |
| Operating Fluid Media | General Purpose Hydraulic Fluid |
| Cartridge Torque Requirements | 35 ft-lbs (47 Nm) |
| Coil Nut Torque Requirements | 4-6 ft-lbs (5.4-8.1 Nm) |
| Cavity | POWER 2W |
| Cavity Tools Kit | 40500005 |
| Seal Kit | 21191100 |

WARNING: the specifications/application data shown in our catalogs and data sheets are intended only as a general guide for the product described (herein). Any specific application should not be undertaken without independent study, evaluation, and testing for suitability.



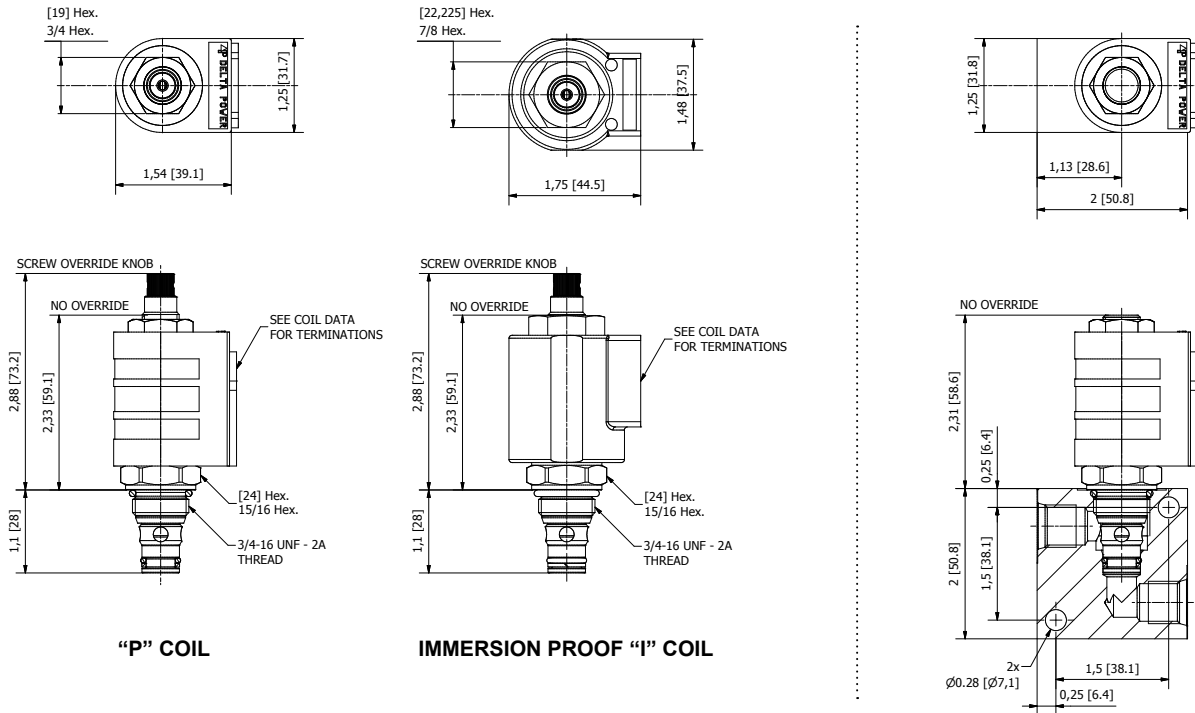
4484 Boeing Drive Rockford, IL 61109 • USA • Phone +1 (815) 397-6628 • Fax +1 (815) 397-2526
 mail: delta@delta-power.com • www.delta-power.com



Via Malavolti, 36 • 41122 Modena • ITALY • Phone +39 (059) 254895 • Fax +39 (059) 253512
 mail: tecnord@tecnord.com • www.tecnord.com

SOLENOID OPERATED DIRECTIONAL CONTROLS

DIMENSIONS



"P" COIL

IMMERSION PROOF "I" COIL

ORDERING INFORMATION

HB-S2A - - - -

Approximate Coil Weight: .42 lbs (.19 kg)

OPTIONS

| | |
|-------------------------|-----------|
| Buna Standard | 00 |
| Viton Standard | V0 |
| Buna, Override | 0M |
| Viton, Override | VM |
| Buna, Screen | A0 |
| Viton, Screen | W0 |
| Buna, Screen, Override | B4 |
| Viton, Screen, Override | V4 |

Note: use screen only if flow direction is from (1) to (2)

BODIES

| | |
|----------|----------------|
| Blank | Without Body |
| N | 1/4 NPTF Ports |
| S | #6 SAE Ports |

VOLTAGE

| | |
|-----------|---------|
| 06 | 6 VDC |
| 12 | 12 VDC |
| 24 | 24 VDC |
| 36 | 36 VDC |
| 48 | 48 VDC |
| 25 | 24 VAC |
| 11 | 120 VAC |
| 22 | 220 VAC |
| 44 | 440 VAC |

Note: Aluminum Body Not durability rated for 5000 PSI (345 bar), consult factory for high pressure body options.

"P" COIL TERMINATION

- DL** Double Lead
- DT** Deutsch on Leads DT04-2P
- ML** Metri-Pack on Leads
- PL** Packard on Leads
- WL** Weatherpack on Leads

- SS** Single Spade
- DS** Double Spade
- HC** DIN 43650 (Hirschmann) - (AC&DC)
- CL** Conduit Lead - (AC Only)
- DI** Deutsch - Integral DT04-2P

IMMERSION PROOF "I" COIL TERMINATION

- IA** "I" Coil AMP Superseal - Integral
- ID** "I" Coil Deutsch - Integral DT04-2P
- IJ** "I" Coil AMP Jr. Timer - Integral
- IM** "I" Coil Metri-Pack - Integral

For Optional Coil Terminations See Coil Section

W 26/2019

WARNING: the specifications/application data shown in our catalogs and data sheets are intended only as a general guide for the product described (herein). Any specific application should not be undertaken without independent study, evaluation, and testing for suitability.



4484 Boeing Drive Rockford, IL 61109 • USA • Phone +1 (815) 397-6628 • Fax +1 (815) 397-2526
mail: delta@delta-power.com • www.delta-power.com



Via Malavolti, 36 • 41122 Modena • ITALY • Phone +39 (059) 254895 • Fax +39 (059) 253512
mail: tecnord@tecnord.com • www.tecnord.com